

ZONE APPROVAL (BY/DATE):

VP. \_\_\_\_\_  
CONTR. \_\_\_\_\_  
RM. \_\_\_\_\_  
CM. \_\_\_\_\_

PROPERTY NO.: 160578  
STORE NO.: 34W1  
JOB NO.: 344547

FILE:  
DATE: ER\_L\_E01.DWG  
CONSTRUCTION SET 06-30-10  
ADDENDUM 1 REVISIONS 07-19-10  
BSRO DCB REVISIONS 08-18-10

SHEET TITLE:  
**LIGHTING PLAN**

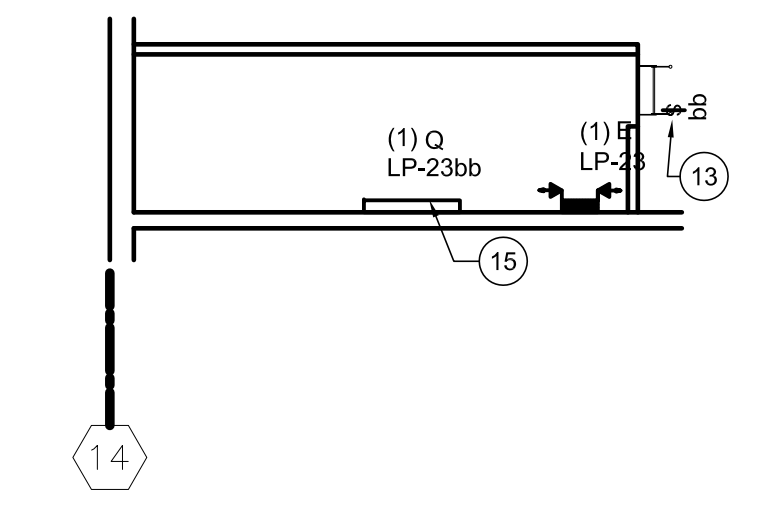
SHEET NUMBER:  
**E1**  
AMCON JOB NO. 93100

**LIGHTING PLAN GENERAL NOTES**

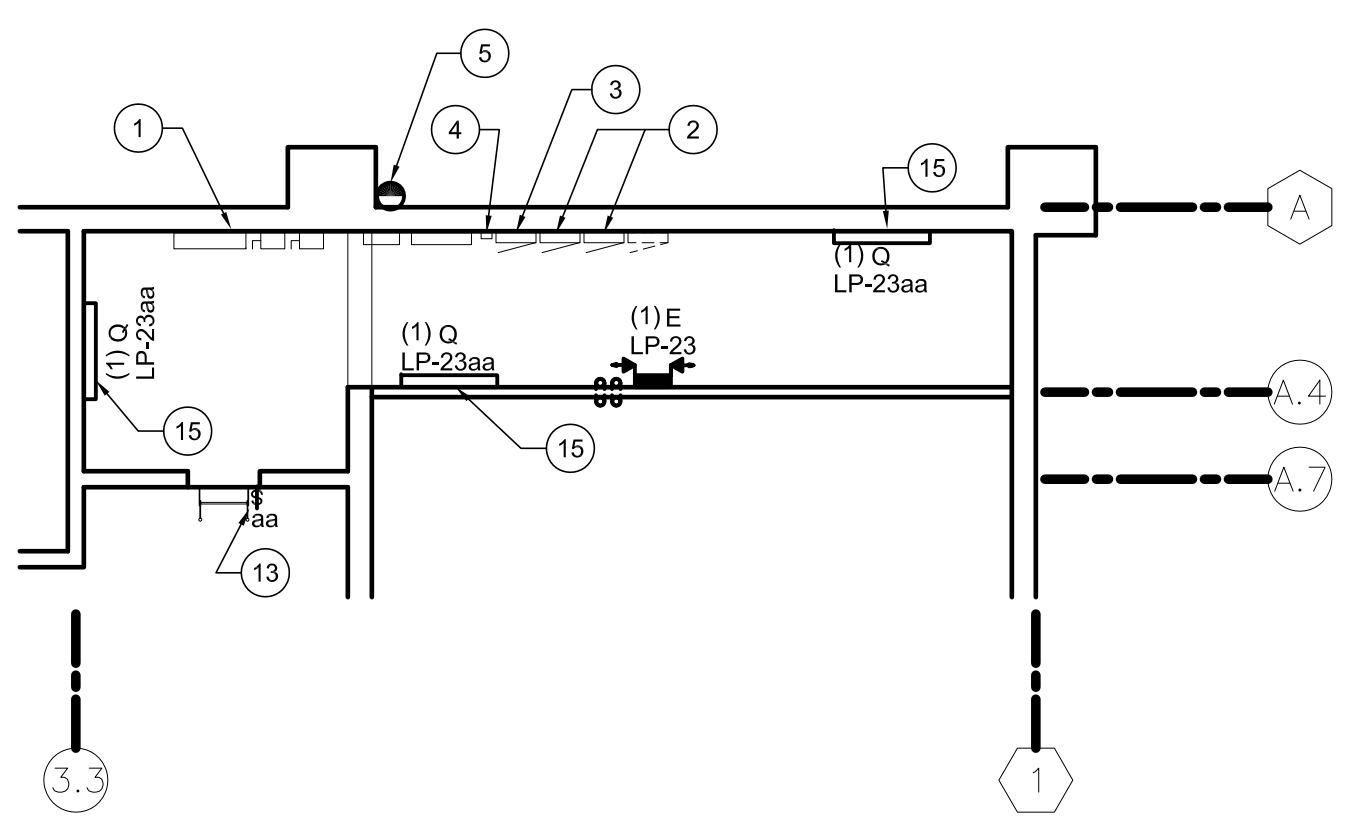
- ALL BATTERY EMERGENCY LIGHTING UNITS SHALL BE WIRED AHEAD OF THE SWITCH(ES) WHICH CONTROLS THE LIGHTING WHERE UNIT IS LOCATED. THE UNIT SHALL OPERATE WHEN THE NORMAL LIGHTING FAILS.
- CONTRACTOR TO FURNISH AND INSTALL A MINIMUM OF THREE (3) PORCELAIN LIGHT SOCKETS WITH 40 WATT 120V, LAMPS EQUALLY SPACE THROUGHOUT THE ATTIC SPACE. THESE LIGHTS ARE TO BE SWITCHED AND CIRCUITED WITH THE UTILITY PLATFORM LIGHTS, AND SHALL INCLUDE TWO (2) SERVICE RECEPTACLES.
- CONTRACTOR TO SEE "ARCHITECTURAL REFLECTED CEILING PLAN" FOR ALL LIGHTING FIXTURES LOCATION DIMENSIONS.
- CONTRACTOR TO SEE "FIXTURE PLAN" SHEET "F1" FOR ALL EQUIPMENT LOCATIONS AND QUANTITIES.
- ALL WIRING SHALL BE INSTALLED IN STRICT ACCORDANCE WITH THE "NEC" AND LOCAL CODE AUTHORITIES HAVING JURISDICTION.
- ALL CONDUIT INSTALLED IN FINISHED AREAS, (ie. CUSTOMER SHOWROOM, OFFICE, ETC.) SHALL BE CONCEALED OUT OF SIGHT.
- CONTRACTOR TO PROVIDE PULL WIRE FOR ALL SIGN JUNCTION BOXES, FINAL CONNECTION AND INSTALLATION OF SIGNS BY SIGN CONTRACTOR.

**# LIGHTING PLAN KEYED NOTES**

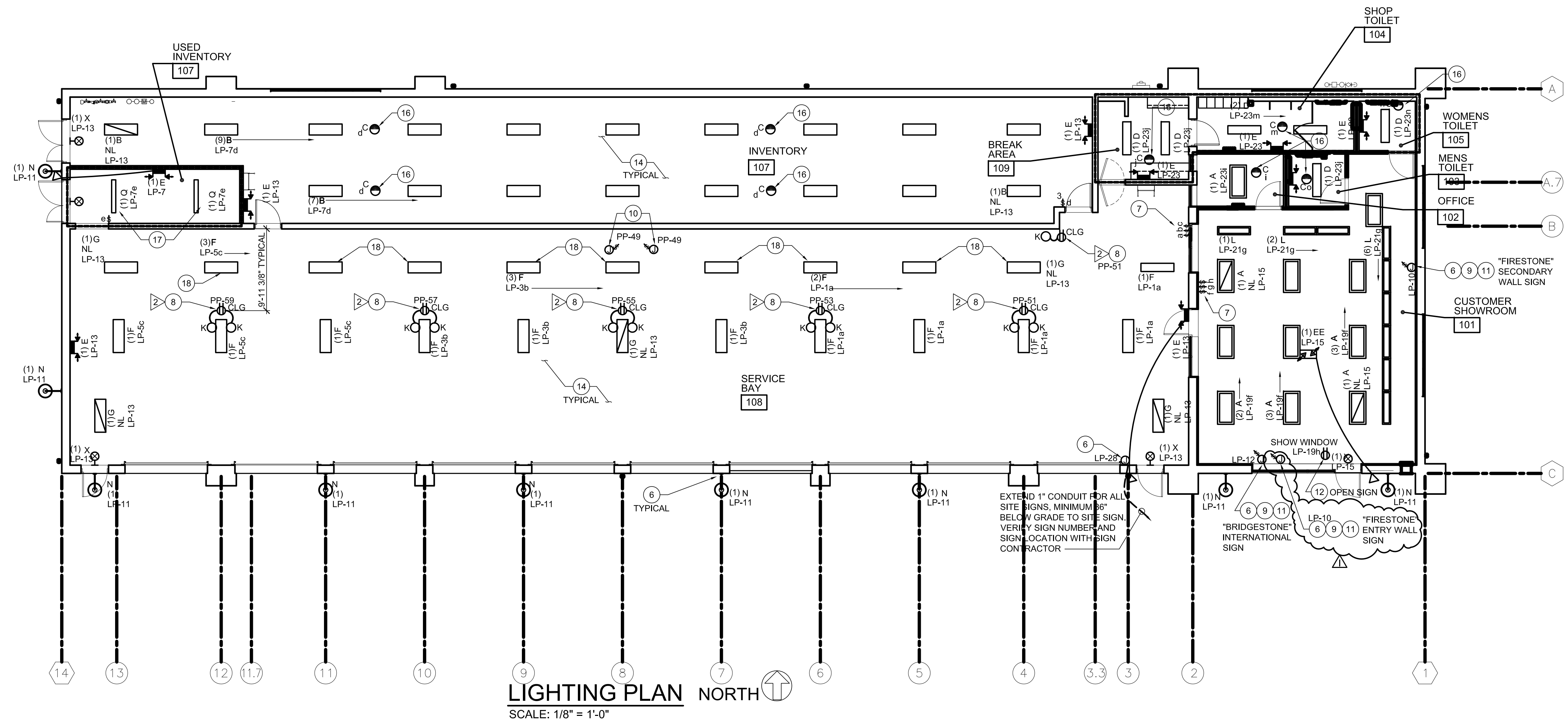
- MAIN DISTRIBUTION PANEL "MDP" SEE RISER DIAGRAM, PANEL SCHEDULES, AND NOTE SHEET E5.
- POWER PANEL "PP" SEE RISER DIAGRAM, PANEL SCHEDULES, AND NOTE SHEET E5.
- LIGHTING PANEL "LP" SEE RISER DIAGRAM, PANEL SCHEDULES, AND NOTES SHEET E5.
- CONTRACTOR TO FURNISH AND INSTALL PARAGON TIME CLOCK "TC". SEE "CONTACTOR DIAGRAM AND NOTES", ON SHEET "E5" FOR ADDITIONAL INFORMATION. VERIFY LOCATION IN FIELD.
- PARAGON PHOTOCELL PROVIDED BY OWNER, INSTALLED BY CONTRACTOR. CONTRACTOR TO INSTALL PHOTOCELL AT ROOF LINE FACING NORTH. VERIFY LOCATION AND REQUIREMENTS IN FIELD. SEE "CONTACTOR DIAGRAM" AND "CONTACTOR NOTES", ON SHEET "E5" FOR ADDITIONAL INFORMATION.
- ROUTE VIA TIME CLOCK "TC" AND CONTACTORS, SEE "CONTACTOR DIAGRAM" AND "CONTACTOR NOTES", ON SHEET "E5" FOR ADDITIONAL INFORMATION.
- CONTRACTOR TO PROVIDE ONE (1) RECESSED THREE GANG BOX WITH THREE (3) TOGGLE SWITCHES AND MATCHING COVER PLATE, FOR SWITCHES LOCATED IN "CUSTOMER SHOWROOM AREA, AND ONE (1) SURFACE MOUNTED THREE GANG BOX WITH THREE (3) TOGGLE SWITCHES AND MATCHING COVER PLATE, FOR SWITCHES LOCATED IN "SERVICE BAY". VERIFY SWITCHING ARRANGEMENT IN FIELD. ROUTE CONDUIT UP INSIDE FACE OF WALL FOR RECESSED BOX, AND ROUTE CONDUIT SURFACE UP WALL IN "SERVICE BAY".
- HEAVY DUTY CORD REEL LIGHT (FIXTURE TYPE "K" AND ELECTRICAL SHOP EQUIPMENT ITEM # 2, FOR "ITEM" INFORMATION, SEE "ELECTRICAL SHOP EQUIPMENT SCHEDULE" ON SHEET "E2", MOUNTED TO ROOF STRUCTURE AT LOCATION SHOWN, COORDINATE INSTALLATION TO AVOID CONFLICT WITH OTHER EQUIPMENT. SEE "CORD REEL LIGHT DETAIL" ON SHEET "E4" FOR ADDITIONAL INFORMATION AND COORDINATE WITH SHEET "F1". FOR EXACT LOCATION, CONTRACTOR SHALL SECURE THE LOW VOLTAGE TRANSFORMER WHICH PLUGS INTO THE RECEPTACLE SO THAT IT CANNOT COME OUT VIA GRAVITY.
- JUNCTION BOXES FOR WALL SIGN WITH TOGGLE SWITCH TYPE DISCONNECT, VERIFY EXACT LOCATION AND NUMBER OF JUNCTION BOXES WITH SIGN CONTRACTOR PRIOR TO ROUGH-IN. JUNCTION BOXES TO BE WITHIN 6'-0" OF EITHER END OF SIGN.
- JUNCTION BOX WITH TOGGLE SWITCH DISCONNECT MOUNTED AT CEILING FOR GAS FIRED RADIANT HEAT CONTROLS. CONTRACTOR TO PROVIDE ALL REQUIRED DEVICES AND EQUIPMENT TO MAKE A COMPLETE WORKING SYSTEM. COORDINATE EXACT LOCATION WITH OTHER CONTRACTORS.
- SEE "ARCHITECTURAL ELEVATIONS" FOR SIGN LOCATIONS.
- RECEPTACLE MOUNTED FLUSH WITH CEILING TILE AND FACING DOWN TO FLOOR, SO AS THE FRONT OF THE RECEPTACLE IS FLUSH WITH THE FACE OF THE CEILING TILE, AND CEILING TILE DIES BEHIND THE COVER PLATE FOR "OPEN" SIGN. SIGN WILL HANG 6" FROM WALL, CONTRACTOR TO VERIFY EXACT LOCATION PRIOR TO ROUGH-IN, SEE SHEET "F2" FOR ADDITIONAL INFORMATION. CONTRACTOR TO SECURE THE SMALL LOW VOLTAGE TRANSFORMER WHICH PLUGS INTO THE RECEPTACLE, SO THAT THE TRANSFORMER CAN NOT COME OUT OF THE PLUG VIA GRAVITY.
- LOCATE SWITCH FOR CONTROL OF PLATFORM LIGHTING AT BOTTOM OF LADDER TO PLATFORM.
- FOR MOUNTING HEIGHTS OF ALL LIGHT FIXTURE TYPE SEE "LIGHT FIXTURE SCHEDULE" ON SHEET "E3", UNLESS NOTED OTHERWISE.
- ALL LIGHT FIXTURES IN THE "PLATFORM" AREA ONLY SHALL BE MOUNTED ON WALL AT 6'-0" AFF AND ROUTED THROUGH LOCAL SWITCH MOUNTED AT BASE OF LADDER. FIELD VERIFY LIGHT FIXTURE LOCATION SO AS NO CONFLICTS WITH FURNACES OR OTHER EQUIPMENT LOCATED ON "PLATFORM".
- CEILING MOUNTED OCCUPANCY SENSOR LUTRON # LOS-CDT-500R-WH TO CONTROL BOTH LIGHT AND EXHAUST FAN IN UNISEX TOILET AND LIGHTS IN OTHER ROOMS AS DESIGNATED.
- MOUNT THESE LIGHTS ONLY UP IN-BETWEEN JOIST WITH BOTTOM OF LIGHT LEVEL WITH BOTTOM OF JOIST.
- THESE LIGHT FIXTURES ONLY TO BE MOUNTED AT 14'-7" AFF.



**PLATFORM LIGHTING PLAN**  
SCALE: 1/8" = 1'-0"



**UTILITY PLATFORM LIGHTING PLAN**  
SCALE: 1/8" = 1'-0"



**LIGHTING PLAN NORTH**  
SCALE: 1/8" = 1'-0"